



front panel operations. Users are able to control the 63200 family remotely via GPIB, RS-232 or APG (Analog Programming) interface.

Chroma 63200 series loads are built in fan speed control to minimize the audio noise. The self-diagnosis routine and the full protections against OP, OC, OT and alarm indicating OV, reverse polarity to ensure the best quality and reliability.

KEY FEATURES

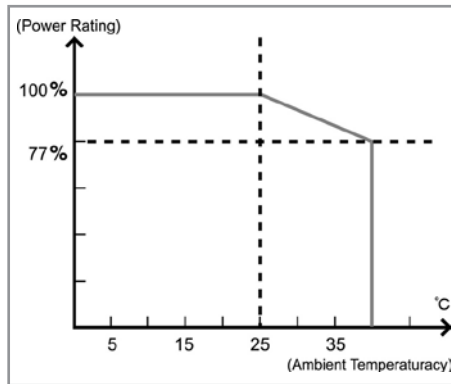
- Power Rating: 2.6kW, 5.2kW, 6.5kW, 10.4kW, 14.5kW, 15.6kW
- Voltage range: 0~80V/0~600V/0~1000V
- Current range: Up to 1000A
- CC, CR, CV, CP load modes
- Master/Slave paralleling control mode, allow synchronous load control under static and dynamic loading mode (Up to 93.6kW)
- Dynamic loading: Up to 20kHz
- Only need 1V to draw rated current
- Programmable slew rate, up to 41A/μs
- Measurement: Voltage / Current / Power / Resistance
- Large LED/LCD display
- External loading waveform simulation
- Short circuit simulation and short circuit current measurement
- Full protection: OC, OP, OT protection and OV, reverse alarm
- Versatile remote controller
- GPIB & RS-232 interfaces

The Chroma Electronic Loads 63200 series are designed for DC power source, power electronic devices and components testing. The high power rating, parallel and synchronization capabilities make them the ideal tool for testing the high power UUT such as SMR, UPS, battery, and fuel cell.

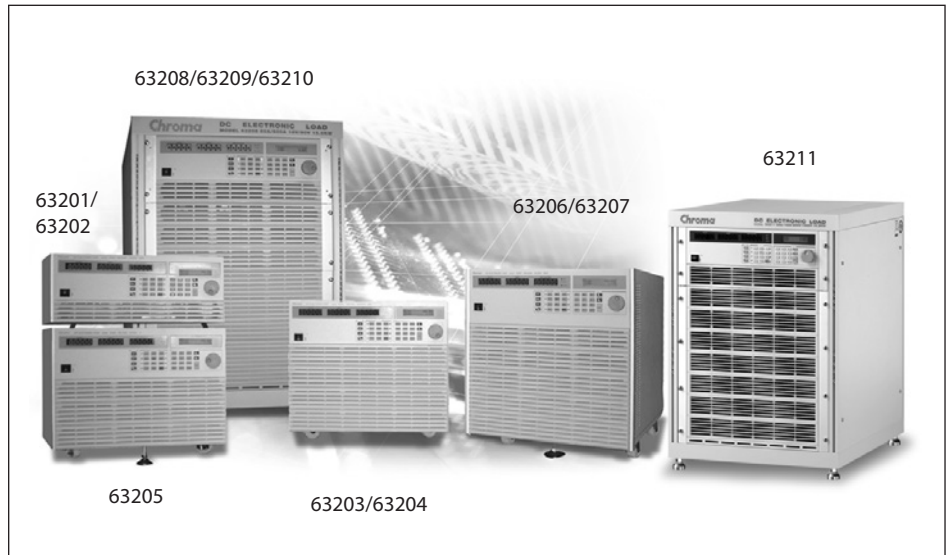
The 63200 series offers 10 different models with power range from 2600 watts to 15600 watts, current from 50A to 1000A and up to 500V input voltage. The 4 load modes setup provide different load simulations for various application occasions. The CC/CR modes are designed to test constant voltage type of power supply. CV mode is used to test battery charger and current source, while CP mode is ideal for battery testing by simulating the real discharge curve.

The 63200 series can draw its rated current under very low voltage (1V typical) even under the highest specified slew rate. This unique feature guarantees the best loading performance to a low voltage power supply. With the unique external waveform simulation and Master /Slave control capability, the 63200 series electronic loads allow users to parallel and synchronize more than one load together from an internal or external loading control signal. This feature provides unlimited load simulation and the possibility of power expansion.

The 63200 series also supply necessary measurement functions and short circuit simulation that extend the test capability for even the most demanding engineering tests and ATE applications. With the LCD display and rotary knob, the 63200 electronic loads offer versatile



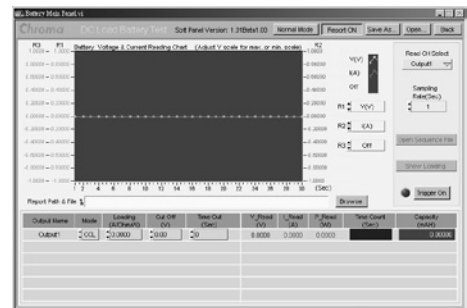
63200 Series DC Electronic Load Family



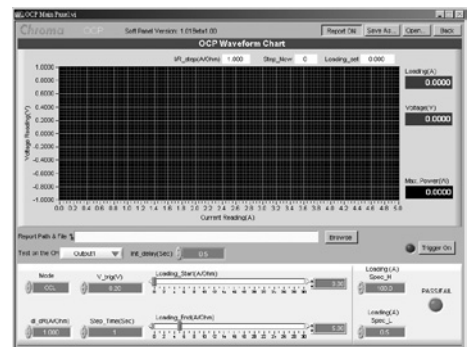
ORDERING INFORMATION

- 63201** : DC Electronic Load 80V/300A/2.6kW
- 63202** : DC Electronic Load 600V/50A/2.6kW
- 63203** : DC Electronic Load 80V/600A/5.2kW
- 63204** : DC Electronic Load 600V/100A/5.2kW
- 63205** : DC Electronic Load 80V/180A/6.5kW
- 63206** : DC Electronic Load 80V/600A/10.4kW
- 63207** : DC Electronic Load 80V/300A/10.4kW
- 63208** : DC Electronic Load 80V/600A/15.6kW
- 63209** : DC Electronic Load 80V/1000A/15.6kW
- 63210** : DC Electronic Load 600V/150A/14.5kW
- 63211** : DC Electronic Load 1000V/150A/15.6kW
- A632001** : Remote Controller
- A632002** : Load Cable 38mm/242A/200cmx2
- A632003** : Load Cable 80mm/390A/200cmx2
- A632004** : Sync. Link Box for 6330A & 63200 series
- A632005** : Softpanel for 63200 series
- A632006** : NI USB-6211 Bus-Powered Multifunction DAQ

Soft Panel



Battery Discharge Test



OCP Test

Battery Test & Automation Solution
 Photovoltaic Test & Automation Solution
 Semiconductor/IC Test Solution
 Laser Diode Test Solution
 LED/Lighting Test Solution
 PFD Test Solution
 Video & Color Test Solution
 Automated Optical Inspection Solution
 Power Electronics Test Solution
 Passive Component Test Solution
 Electrical Safety Test Solution
 General Purpose Test Solution
 Thermoelectric Test & Control Solution
 PXI Test & Measurement Solution
 Manufacturing Execution Systems Solution

| SPECIFICATIONS-1 | | | | | | |
|---------------------------------|--|---------------|--|---------------|--|---------------|
| Model | 63201 | | 63202 | | 63203 | |
| Power *1 | 260W | 2600W | 260W | 2600W | 520W | 5200W |
| Current *2 | 0~30A | 0~300A | 0~5A | 0~50A | 0~60A | 0~600A |
| Voltage | 0~80V | | 0~600V | | 0~80V | |
| Min. Operating voltage | 0.5V @ 15A | 0.5V @ 150A | 1.5V @ 2.5A | 1.5V @ 25A | 0.5V @ 30A | 0.5V @ 300A |
| | 1V @ 30A | 1V @ 300A | 3V @ 5A | 3V @ 50A | 1V @ 60A | 1V @ 600A |
| Constant Current mode | | | | | | |
| Range | 0~30A | 0~300A | 0~5A | 0~50A | 0~60A | 0~600A |
| Resolution | 7.7mA | 77mA | 1.4mA | 14mA | 16mA | 160mA |
| Accuracy | 0.1%+0.1%F.S. | 0.2%+0.1%F.S. | 0.1%+0.1%F.S. | 0.2%+0.1%F.S. | 0.1%+0.1%F.S. | 0.2%+0.1%F.S. |
| Constant Resistance Mode | | | | | | |
| Range | 0.005~20Ω | 0.25~1000Ω | 0.25~1000Ω | 10~40000Ω | 0.0025~10Ω | 0.125~500Ω |
| Resolution*3 | 52mS | 1.04mS | 1.2mS | 28.8μS | 104mS | 2.1mS |
| Accuracy*4 | 0.104S+0.35% | 0.9S+0.1% | 0.0046S+0.35% | 0.04S+0.1% | 0.208S+0.35%*5 | 1.2S+0.1% |
| Accuracy*6 (Vin>7V) | 0.104S+0.35% | 0.0021S+0.35% | 0.0046S+0.35% | 114μS+0.35% | 0.208S+0.35% | 0.0042S+0.35% |
| Constant Voltage mode | | | | | | |
| Range | 0~16V | 0~80V | 0~150V | 0~600V | 0~16V | 0~80V |
| Resolution | 4mV | 20mV | 40mV | 162mV | 4mV | 20mV |
| Accuracy | 0.05%+0.1%F.S. | | 0.05%+0.1%F.S. | | 0.05%+0.1%F.S. | |
| Constant Power mode | | | | | | |
| Range | 0.6~260W | 6~2600W | 0.625~260W | 6.25~2600W | 1.2~520W | 12~5200W |
| Resolution | 7.5mW | 75mW | 3.125mW | 31.25mW | 22.5mW | 225mW |
| Accuracy | 0.5%+0.5%F.S. | | 0.5%+0.5%F.S. | | 0.5%+0.5%F.S. | |
| Dynamic mode | | | | | | |
| Timing | | | | | | |
| T1&T2 | 0.025~10ms | 1ms~30s | 0.025~10ms | 1ms~30s | 0.025~10ms | 1ms~30s |
| Resolution | 1μs | 1ms | 1μs | 1ms | 1μs | 1ms |
| Accuracy | 1μs+100ppm | 1ms+100ppm | 1μs+100ppm | 1ms+100ppm | 1μs+100ppm | 1ms+100ppm |
| Slew rate | 5mA~1.25A/μs | 50mA~12.5A/μs | 0.8mA~0.2A/μs | 8mA~2A/μs | 10mA~2.5A/μs | 100mA~25A/μs |
| Resolution | 5mA/μs | 50mA/μs | 0.8mA/μs | 8mA/μs | 10mA/μs | 100mA/μs |
| Accuracy | 10% ± 20μs | | 10% ± 20μs | | 10% ± 20μs | |
| Min. Rise Time | 24μs (typical) | | 24μs (typical) | | 24μs (typical) | |
| Current | | | | | | |
| Range | 0~30A | 0~300A | 0~5A | 0~50A | 0~60A | 0~600A |
| Resolution | 7.7mA | 77mA | 1.4mA | 14mA | 16mA | 160mA |
| Accuracy | 0.4%F.S. | | 0.4%F.S. | | 0.4%F.S. | |
| Measurement | | | | | | |
| Voltage Read Back | | | | | | |
| Range | 0~16V | 0~80V | 0~150V | 0~600V | 0~16V | 0~80V |
| Resolution | 0.6mV | 2.6mV | 5.1mV | 21mV | 0.6mV | 2.6mV |
| Accuracy | 0.05%+0.05%F.S. | | 0.05%+0.05%F.S. | | 0.05%+0.05%F.S. | |
| Current Read Back | | | | | | |
| Range | 0~30A | 0~300A | 0~5A | 0~50A | 0~60A | 0~600A |
| Resolution | 1mA | 10mA | 0.18mA | 1.8mA | 2mA | 20mA |
| Accuracy | 0.1%+0.1%F.S. | | 0.1%+0.1%F.S. | | 0.1%+0.1%F.S. | |
| Power Read Back | | | | | | |
| Range | 0~260W | 0~2600W | 0~260W | 0~2600W | 0~520W | 0~5200W |
| Accuracy*7 | 0.3%+0.3%F.S. | | 0.3%+0.3%F.S. | | 0.3%+0.3%F.S. | |
| General | | | | | | |
| Short Circuit | | | | | | |
| current | 30A | 300A | 5A | 50A | 60A | 600A |
| Input Rating | 1Ø 100/200Vac ± 10% V _{LN} , 47~63Hz ; 1Ø 115/230Vac ± 10% V _{LN} , 47~63Hz | | 1Ø 100/200Vac ± 10% V _{LN} , 47~63Hz ; 1Ø 115/230Vac ± 10% V _{LN} , 47~63Hz | | 1Ø 100/200Vac ± 10% V _{LN} , 47~63Hz ; 1Ø 115/230Vac ± 10% V _{LN} , 47~63Hz | |
| Dimension (H x W x D) | 177 x 440 x 589 mm / 6.9 x 17.3 x 23.2 inch | | 177 x 440 x 589 mm / 6.9 x 17.3 x 23.2 inch | | 353 x 440 x 589 mm / 6.9 x 17.3 x 23.2 inch | |
| Weight | 30 kg / 66.13 lbs | | 30 kg / 66.13 lbs | | 62 kg / 136.68 lbs | |
| Safety & EMC | CE | | CE | | CE | |

| SPECIFICATIONS-2 | | | | | | |
|---------------------------------|--|----------------|--|---------------|--|---------------|
| Model | 63204 | | 63205 | | 63206 | |
| Power*1 | 520W | 5200W | 650W | 6500W | 1040W | 10400W |
| Current | 0~10A | 0~100A | 0~18A | 0~180A | 0~60A | 0~600A |
| Voltage*2 | 0~600V | | 0~80V | | 0~80V | |
| Min. Operating voltage | 1.5V @ 5A | 1.5V @ 50A | 0.5V @ 9A | 0.5V @ 90A | 0.5V @ 30A | 0.5V @ 300A |
| | 3V @ 10A | 3V @ 100A | 1V @ 18A | 1V @ 180A | 1V @ 60A | 1V @ 600A |
| Constant Current mode | | | | | | |
| Range | 0~10A | 0~100A | 0~18A | 0~180A | 0~60A | 0~600A |
| Resolution | 2.8mA | 28mA | 5.2mA | 52mA | 21mA | 170mA |
| Accuracy | 0.1%+0.1%F.S. | 0.2%+0.1%F.S. | 0.1%+0.2%F.S. | 0.1%+0.2%F.S. | 0.1%+0.2%F.S. | 0.1%+0.2%F.S. |
| Constant Resistance Mode | | | | | | |
| Range | 0.125~500Ω | 5~20000Ω | 0.008~32Ω | 0.4~1600Ω | 0.0025~10Ω | 0.125~500Ω |
| Resolution*3 | 2.3mS | 57.56μS | 35mS | 0.7mS | 112.5mS | 2.25mS |
| Accuracy*4 | 0.0046S+0.35% | 0.08S+0.1% | 0.07S+0.35% | 0.75S+0.1% | 0.225S+0.35% *5 | 1.2S+0.1% |
| Accuracy*6 (Vin>7V) | 0.0046S+0.35% | 115.51μS+0.35% | 0.07S+0.35% | 0.0014S+0.35% | 0.225S+0.35% | 0.0045S+0.35% |
| Constant Voltage mode | | | | | | |
| Range | 0~150V | 0~600V | 0~16V | 0~80V | 0~16V | 0~80V |
| Resolution | 40mV | 162mV | 4mV | 20mV | 4mV | 20mV |
| Accuracy | 0.05%+0.1%F.S. | | 0.05%+0.1%F.S. | | 0.05%+0.1%F.S. | |
| Constant Power mode | | | | | | |
| Range | 1.25~520W | 12.5~5200W | 0.36~650W | 3.6~6500W | 1.2~1040W | 12~10400W |
| Resolution | 6.25mW | 62.5mW | 4.6mW | 46mW | 22.5mW | 225mW |
| Accuracy | 0.5%+0.5%F.S. | | 0.5%+0.5%F.S. | | 0.5%+0.5%F.S. | |
| Dynamic mode | | | | | | |
| Timing | | | | | | |
| T1&T2 | 0.025~10ms | 1ms~30s | 0.025~10ms | 1ms~30s | 0.025~10ms | 1ms~30s |
| Resolution | 1μs | 1ms | 1μs | 1ms | 1μs | 1ms |
| Accuracy | 1μs+100ppm | 1ms+100ppm | 1μs+100ppm | 1ms+100ppm | 1μs+100ppm | 1ms+100ppm |
| Slew rate | 1.6mA~0.4A/μs | 16mA~4A/μs | 3mA~0.75A/μs | 30mA~7.5A/μs | 10mA~3A/μs | 100mA~25A/μs |
| Resolution | 1.6mA/μs | 16mA/μs | 3mA/μs | 30mA/μs | 12mA/μs | 100mA/μs |
| Accuracy | 10% ± 20μs | | 10% ± 20μs | | 10% ± 20μs | |
| Min. Rise Time | 24μs (typical) | | 24μs (typical) | | 20μs (typical) | |
| Current | | | | | | |
| Range | 0~10A | 0~100A | 0~18A | 0~180A | 0~60A | 0~600A |
| Resolution | 2.8mA | 28mA | 5.2mA | 52mA | 21mA | 170mA |
| Accuracy | 0.4%F.S. | | 0.4%F.S. | | 0.4%F.S. | |
| Measurement | | | | | | |
| Voltage Read Back | | | | | | |
| Range | 0~150V | 0~600V | 0~16V | 0~80V | 0~16V | 0~80V |
| Resolution | 5.1mV | 21mV | 0.6mV | 2.6mV | 0.6mV | 2.6mV |
| Accuracy | 0.05%+0.05%F.S. | | 0.05%+0.05%F.S. | | 0.05%+0.05%F.S. | |
| Current Read Back | | | | | | |
| Range | 0~10A | 0~100A | 0~18A | 0~180A | 0~60A | 0~600A |
| Resolution | 0.35mA | 3.5mA | 0.7mA | 7mA | 2.6mA | 21mA |
| Accuracy | 0.1%+0.1%F.S. | | 0.1%+0.1%F.S. | | 0.1%+0.1%F.S. | |
| Power Read Back | | | | | | |
| Range | 0~520W | 0~5200W | 0~650W | 0~6500W | 0~1040W | 0~10400W |
| Accuracy*7 | 0.3%+0.3%F.S. | | 0.3%+0.3%F.S. | | 0.3%+0.3%F.S. | |
| General | | | | | | |
| Short Circuit | | | | | | |
| current | 10A | 100A | 18A | 180A | 60A | 600A |
| Input Rating | 1Ø 100/200Vac ± 10% V _{LN} , 47~63Hz ; 1Ø 115/230Vac ± 10% V _{LN} , 47~63Hz | | 1Ø 100/200Vac ± 10% V _{LN} , 47~63Hz ; 1Ø 115/230Vac ± 10% V _{LN} , 47~63Hz | | 1Ø 100/200Vac ± 10% V _{LN} , 47~63Hz ; 1Ø 115/230Vac ± 10% V _{LN} , 47~63Hz | |
| Dimension (H x W x D) | 353 x 440 x 589 mm / 13.9 x 17.3 x 23.2 inch | | 310 x 440 x 589 mm / 12.2 x 17.3 x 23.2 inch | | 443.7 x 440 x 589 mm / 17.5 x 17.3 x 23.2 inch | |
| Weight | 62 kg / 136.68 lbs | | 62 kg / 136.68 lbs | | 90 kg / 198.41 lbs | |
| Safety & EMC | CE | | CE | | CE | |

Battery Test & Automation Solution
 Photovoltaic Test & Automation Solution
 Semiconductor/IC Test Solution
 Laser Diode Test Solution
 LED/Lighting Test Solution
 PPD Test Solution
 Video & Color Test Solution
 Automated Optical Inspection Solution
 Power Electronics Test Solution
 Passive Component Test Solution
 Electrical Safety Test Solution
 General Purpose Test Solution
 Thermoelectric Test & Control Solution
 PXI Test & Measurement Solution
 Manufacturing Execution Systems Solution

| SPECIFICATIONS-3 | | | | | | |
|---------------------------------|--|---------------|--|---------------|--|----------------|
| Model | 63207 | | 63208 | | 63209 | |
| Power *1 | 1040W | 10400W | 1560W | 15600W | 1560W | 15600W |
| Current | 0~30A | 0~300A | 0~60A | 0~600A | 0~100A | 0~1000A |
| Voltage*2 | 0~80V | | 0~80V | | 0~80V | |
| Min. Operating voltage | 0.5V @ 15A | 0.5V @ 150A | 0.5V @ 30A | 0.5V @ 300A | 0.5V @ 50A | 0.5V @ 500A |
| | 1V @ 30A | 1V @ 300A | 1V @ 60A | 1V @ 600A | 1V @ 100A | 1V @ 1000A |
| Constant Current mode | | | | | | |
| Range | 0~30A | 0~300A | 0~60A | 0~600A | 0~100A | 0~1000A |
| Resolution | 10.3mA | 82mA | 21mA | 163mA | 34.2mA | 274mA |
| Accuracy | 0.1%+0.2%F.S. | 0.1%+0.2%F.S. | 0.1%+0.2%F.S. | 0.1%+0.2%F.S. | 0.1%+0.2%F.S. | 0.1%+0.2%F.S. |
| Constant Resistance Mode | | | | | | |
| Range | 0.005~20Ω | 0.25~1000Ω | 0.0025~10Ω | 0.125~500Ω | 0.0015~6Ω | 0.075~300Ω |
| Resolution*3 | 55.7mS | 1.1mS | 110mS | 2.22mS | 186.5mS | 3.73mS |
| Accuracy *4 | 0.1115+0.35% | 0.95+0.1% | 0.225+0.35% *5 | 1.25+0.1% | 0.3735+0.35% *5 | 1.25+0.1% |
| Accuracy *6 (Vin>7V) | 0.1115+0.35% | 0.00225+0.35% | 0.225+0.35% | 0.00445+0.35% | 0.3735+0.35% | 0.00755+0.35% |
| Constant Voltage mode | | | | | | |
| Range | 0~16V | 0~80V | 0~16V | 0~80V | 0~16V | 0~80V |
| Resolution | 4mV | 20mV | 4mV | 20mV | 4mV | 20mV |
| Accuracy | 0.05%+0.1%F.S. | | 0.05%+0.1%F.S. | | 0.05%+0.1%F.S. | |
| Constant Power mode | | | | | | |
| Range | 0.744~1040W | 6~10400W | 1.2~1560W | 12~15600W | 2.5~1560W | 20~15600W |
| Resolution | 9.3mW | 75mW | 22.5mW | 225mW | 31.25mW | 250mW |
| Accuracy | 0.5%+0.5%F.S. | | 0.5%+0.5%F.S. | | 0.5%+0.5%F.S. | |
| Dynamic mode | | | | | | |
| Timing | | | | | | |
| T1&T2 | 0.025~10ms | 1ms~30s | 0.025~10ms | 1ms~30s | 0.025~10ms | 1ms~30s |
| Resolution | 1μs | 1ms | 1μs | 1ms | 1μs | 1ms |
| Accuracy | 1μs+100ppm | 1ms+100ppm | 1μs+100ppm | 1ms+100ppm | 1μs+100ppm | 1ms+100ppm |
| Slew rate | 6mA~1.5A/μs | 50mA~12.5A/μs | 12mA~3A/μs | 100mA~25A/μs | 20mA~5A/μs | 166mA~41.6A/μs |
| Resolution | 6mA/μs | 50mA/μs | 12mA/μs | 100mA/μs | 20mA/μs | 166mA/μs |
| Accuracy | 10% ± 20μs | | 10% ± 20μs | | 10% ± 20μs | |
| Min. Rise Time | 20μs (typical) | | 20μs (typical) | | 20μs (typical) | |
| Current | | | | | | |
| Range | 0~30A | 0~300A | 0~60A | 0~600A | 0~100A | 0~1000A |
| Resolution | 10.3mA | 82mA | 21mA | 163mA | 34.2mA | 274mA |
| Accuracy | 0.4%F.S. | | 0.4%F.S. | | 0.4%F.S. | |
| Measurement | | | | | | |
| Voltage Read Back | | | | | | |
| Range | 0~16V | 0~80V | 0~16V | 0~80V | 0~16V | 0~80V |
| Resolution | 0.6mV | 2.6mV | 0.6mV | 2.6mV | 0.6mV | 2.6mV |
| Accuracy | 0.05%+0.05%F.S. | | 0.05%+0.05%F.S. | | 0.05%+0.05%F.S. | |
| Current Read Back | | | | | | |
| Range | 0~30A | 0~300A | 0~60A | 0~600A | 0~100A | 0~1000A |
| Resolution | 1.3mA | 11mA | 2.7mA | 21mA | 4.5mA | 36mA |
| Accuracy | 0.1%+0.1%F.S. | | 0.1%+0.1%F.S. | | 0.1%+0.1%F.S. | |
| Power Read Back | | | | | | |
| Range | 0~1040W | 0~10400W | 0~1560W | 0~15600W | 0~1560W | 0~15600W |
| Accuracy*7 | 0.3%+0.3%F.S. | | 0.3%+0.3%F.S. | | 0.3%+0.3%F.S. | |
| General | | | | | | |
| Short Circuit | | | | | | |
| Current | 30A | 300A | 60A | 600A | 100A | 1000A |
| Input Rating | 1Ø 100/200Vac ± 10% V _{LN} , 47~63Hz ; 1Ø 115/230Vac ± 10% V _{LN} , 47~63Hz | | 1Ø 100/200Vac ± 10% V _{LN} , 47~63Hz ; 1Ø 115/230Vac ± 10% V _{LN} , 47~63Hz | | 1Ø 100/200Vac ± 10% V _{LN} , 47~63Hz ; 1Ø 115/230Vac ± 10% V _{LN} , 47~63Hz | |
| Dimension (H x W x D) | 443.7 x 440 x 589 mm / 17.5 x 17.3 x 23.2 inch | | 762.8 x 546 x 700 mm / 30 x 21.5 x 27.6 inch | | 762.8x546x700mm/ 30x21.5x27.6inch(cabinet) | |
| Weight | 90 kg / 198.24 lbs | | 170 kg / 374.45 lbs | | 170 kg / 374.45 lbs | |
| Safety & EMC | CE | | CE | | CE | |

| SPECIFICATIONS-4 | | | | |
|---------------------------------|---|---------------|---|---------------|
| Model | 63210 | | 63211 | |
| Power *1 | 1450W | 14500W | 15600W | 15600W |
| Current | 0~15A | 0~150A | 0~30A | 0~150A |
| Voltage*2 | 0~600V | | 10~1000V | |
| Min. Operating voltage | 1.5V @ 7.5A | 1.5V @ 75A | 5V @ 15A | 5V @ 75A |
| | 3V @ 15A | 3V @ 150A | 10V @ 30A | 10V @ 150A |
| Constant Current mode | | | | |
| Range | 0~15A | 0~150A | 0~30A | 0~150A |
| Resolution | 4.9mA | 39mA | 7.5mA | 37.5mA |
| Accuracy | 0.1%+0.1%F.S. | 0.2%+0.1%F.S. | 0.1%+0.1%F.S. | 0.2%+0.1%F.S. |
| Constant Resistance Mode | | | | |
| Range | 0.1~400Ω | 5~20000Ω | 0.2~200Ω | 8~8000Ω |
| Resolution*3 | 3.21mS | 80.1μS | 1.25mS | 31.25μS |
| Accuracy *4 | 0.0128S+0.35% | 0.0925+0.1% | 1.25mS+0.37231% | 31.25μS+0.1% |
| Accuracy *6 (Vin>7V) | 0.0128S+0.35% | 317.7μS+0.35% | -- | -- |
| Constant Voltage mode | | | | |
| Range | 3~150V | 3~600V | 0~250V | 0~1000V |
| Resolution | 40mV | 162mV | 62.5mV | 250mV |
| Accuracy | 0.05%+0.1%F.S. | | 0.05%+0.1%F.S. | |
| Constant Power mode | | | | |
| Range | 5~1450W | 50~14500W | 2.5~1560W | 20~15600W |
| Resolution | 25mW | 250mW | 390mW | 3.9W |
| Accuracy | 0.5%+0.5%F.S. | | 0.5%+0.5%F.S. | |
| Dynamic mode | | | | |
| Timing | | | | |
| T1&T2 | 0.025~10ms | 1ms~30s | 0.025~10ms | 1ms~30s |
| Resolution | 1μs | 1ms | 1μs | 1ms |
| Accuracy | 1μs+100ppm | 1ms+100ppm | 1μs+100ppm | 1ms+100ppm |
| Slew rate | 3mA~0.75A/μs | 25mA~6A/μs | 5mA~1.25A/μs | 25mA~6.25A/μs |
| Resolution | 3mA/μs | 25mA/μs | 5mA/μs | 25mA/μs |
| Accuracy | 10% ± 20μs | | 10% ± 20μs | |
| Min. Rise Time | 150 μs (typical) | | 24 μs (typical) | |
| Current | | | | |
| Range | 0~15A | 0~150A | 0~30A | 0~150A |
| Resolution | 4.9mA | 39mA | 0.6mA | 3mA |
| Accuracy | 0.4%F.S. | | 0.4%F.S. | |
| Measurement | | | | |
| Voltage Read Back | | | | |
| Range | 0~150V | 0~600V | 0~250V | 0~1000V |
| Resolution | 5.1mV | 21mV | 5mV | 20mV |
| Accuracy | 0.05%+0.05%F.S. | | 0.05%+0.05%F.S. | |
| Current Read Back | | | | |
| Range | 0~15A | 0~150A | 0~30A | 0~150A |
| Resolution | 0.64mA | 5.1mA | 0.6mA | 3mA |
| Accuracy | 0.1%+0.1%F.S. | | 0.1%+0.1%F.S. | |
| Power Read Back | | | | |
| Range | 0~1450W | 0~14500W | 0~1560W | 0~15600W |
| Accuracy*7 | 0.3%+0.3%F.S. | | 0.3%+0.3%F.S. | |
| General | | | | |
| Short Circuit | | | | |
| Current | 15A | 150A | 30A | 150A |
| Input Rating | 1∅ 100/200Vac ± 10% V _{LN} , 47~63Hz; 1∅ 115/230Vac ± 10% V _{LN} , 47~63Hz | | 1∅ 100/200Vac ± 10% V _{LN} , 47~63Hz; 1∅ 115/230Vac ± 10% V _{LN} , 47~63Hz | |
| Dimension (H x W x D) | 762.8x546x700mm/ 30x21.5x27.6inch(cabinet) | | 762.8x546x700mm/ 30x21.5x27.6inch(cabinet) | |
| Weight | 170 kg / 374.45 lbs | | 170 kg / 374.45 lbs | |
| Safety & EMC | CE | | CE | |

NOTE*1 : The power rating specifications at ambient temperature=25°C and see the diagram below for power derating.

NOTE*2 : If the operating voltage exceeds the rated voltage for 1.1 times, it would cause permanent damage to the device.

NOTE*3 : S (siemens) is the SI unit of conductance, equal to one reciprocal ohm.

NOTE*4 : The Vin must be greater than min. operating voltage of each model.

NOTE*5 : Setting error will be 1% for R<0.005Ω at CRL range.

NOTE*6 : The Vin must be greater than 7V of each model.

NOTE*7 : Power F.S. = Vrange x Irange F.S.