

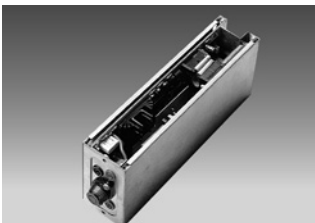


### KEY FEATURES

- Test Voltage and Current Harmonics in compliance with IEC61000-3-2, IEC61000-3-2 A14
- Test Flicker (voltage fluctuations) pre-compliance with IEC61000-3-3
- Advanced DFT and DSP technology
- Multi-processor system configuration
- Modular instrument with three measurement modules in DSP type
- 5 unique test function modules with Harmonics, Flickers, Multimeter, Recording, and Waveform for multi-purpose test application requirements
- Harmonic analysis and bar graph / table results display up to 40 harmonics
- 2-channel 18-bit A/D converter in each measurement module
- Simultaneous presentation for voltage and current curves. (1~16 periods)
- Pre-programmed functions against standardized limits
- Wide voltage (6V to 2000Vpk) and current (0.1A to 300Apk) input range
- 3 1/2" floppy driver for software update and result storage (Model 6630 only)



**Model 6632**



**A663010:** DSP Measurement Module



**A663009:** Measurement Fixture



Chroma introduces a completely new concept, Power Measurement System, for fast and accurate power related measurements in compliance with international standards.

The Power Measurement System consisting of an advanced 6630/6632 Power Analyzer and a 6530 Series or other Chroma family AC Power Source is the ATE for Voltage and Current Harmonics test in compliance with IEC61000-3-2, IEC61000-3-2 A14, and for Flicker test (voltage fluctuations) following the IEC 61000-3-3 international standards. Performance testing is pre-programmed limits to specifications against standardized limits. The user-specified limits can be added.

Chroma 6630/6632 Power Analyzer is a modular instrument that is equipped with DSP type measurement module. Each measurement module contains Processor, Memory (ROM, RAM, Flash ROM), and two channels 18 bits A/D converter. As the Discrete Fourier Transform (DFT) technology is implemented in the software with 32-bit floating point mathematical algorithms, it

can measure instruments related power at high speed and analyze the measurement parameters (value) accurately. The instrument is also a combination of all standard instruments generally used for power measurements. It provides Voltage (U), Current (I), Active Power (P), Reactive Power (Q), Apparent Power (S), Active Energy (W), Reactive Energy (Wr), Apparent Energy (Wa), Frequency (f), Crest Factor (CF), Power Factor (PF), Phase Angle (Ø).

Chroma 6630/6632 Power Analyzer is a flexible and unique multipurpose instrument designed for using stand-alone and integrated. Harmonics, Flicker, Multimeter, Recording, and Waveform are the five major function modules that can work stand-alone, or be integrated into an ATE environment to facilitate the system for testing and analysis. The built in floppy disk drive gives users a convenient way to save the test parameters and results.

SPECIFICATIONS		
Model	6630	6632
Display	LCD 640x480 pixels with backlight	--
Printer output for hardcopy	Parallel (Centronics compatible) or serial (RS-232)	
Floppy drive	1.44MB 3" PC-format. For software updates and result storage	--
Rack mounting	With optional rack mount kit. Size 19" 3HE	
Dimension (H x W x D)	132.6 x 423 x 331 mm / 5.22 x 16.67 x 13.07 inch	
Weight	Single phase 9 kg / 20 lbs, three phase 11.4 kg / 25 lbs	
Operating environment	0 to +40°C, < 80 % R.H. non condensing	
Storage environment	-30 to +60°C non condensing	
Power supply	100-130V or 200~240V, automatic range selection	
Power line frequency	50/60 Hz	
Power consumption	45 W max.	
Protection	Fuse 2xF1A on rear panel	
Safety	Designed to comply with the Low Voltage Directive 73/23/EEC plus parts of 93/68/EEC. Applied standard, EN61010-1:1993, Installation category II.	
EMC	Designed to comply with the EMC Directive 89/336/EEC and 92/31/EEC Applied standards, EN50081-1:92 and EN50082-1:92	
Warranty	One year from date of delivery for manufacturing and material failures	

### ORDERING INFORMATION

- 6630** : Power Analyzer, 1Ø DSP
- 6630** : Power Analyzer, 3Ø DSP
- 6632** : Power Analyzer, 1Ø DSP
- 6632** : Power Analyzer, 3Ø DSP
- A663003** : Measurement Input Cables
- A663004** : Rack Mounting Kit for Model 6630/6632
- A663008** : Spare Current Measurement Input Fuse
- A663009** : Measurement Fixture
- A663010** : DSP Measurement Module